

GeoTours Mobile v1.0.4

Revised 12.26.07

Requirements

Hardware Requirements

- Any windows-based Smartphone or PDA
- GPS receiver* (integrated or attached via Bluetooth or serial)

* Attached GPS receivers must communicate with the device through NMEA sentences.

Software Requirements

- Operating System: Windows Mobile 6.0, Windows Mobile 5.0, or Windows Pocket PC 2003
- .NET Compact Framework 2.0
 - a. Can be downloaded from <http://www.geovative.com/goto.asp?siteId=11>

Installation Instructions

Once you've download the GeoTours Mobile software (full version or free trial), follow the following steps:

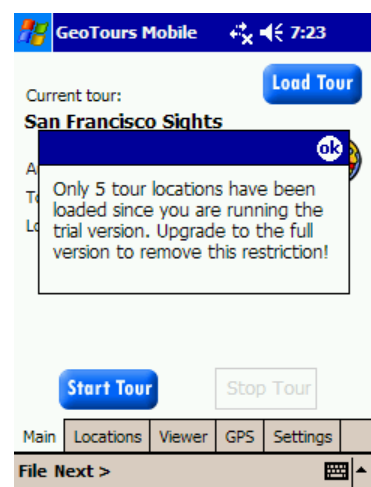
1. Connect your mobile device to your PC.
2. Run the GeoTours Mobile setup program.
3. Follow steps in the GeoTours Mobile Setup Wizard.
4. Complete additional steps on your mobile device.
5. You may be prompted with an alert that says "This software is from an unknown publisher". You must choose 'Yes' on this dialog.

Free Trial Limitations & Upgrading to Full Version

The trial version is fully-functional with the following restrictions:

- Only 5 tour locations will be loaded from each tour.
- Tour location audio will only play for 15 seconds.

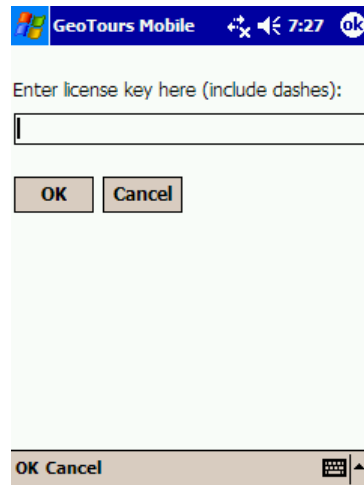
You will see the following alerts when loading a tour and when taking a tour.



Upgrading to the Full Version

To upgrade your free trial version to the full version, visit Geovative's site at <http://www.geovative.com> and purchase the full version of GeoTours Mobile. Once your purchase is complete, a license key will be e-mailed to you.

Enter the license key on the screen shown here. You can find this screen by clicking the "License Key" button on the Settings tab or the About page.



Loading a Tour

Tours can be downloaded from GeoTours Xchange (<http://www.geovative.com>), a collection of user-created tours around the world. Additionally, Travel By GPS (<http://www.travelbygps.com>) maintains support for downloading tours in the GeoTours Mobile format.

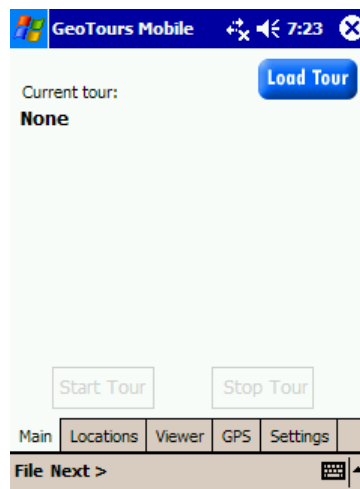
When download tours for GeoTours Mobile, you will receive a .gpx file and multimedia (images and audio) files. By default, GeoTours Mobile looks for a GeoTours folder on your device's storage card. You can change this folder on the 'Settings' tab.

GeoTours Mobile requires tour content to be loaded in the following directory structure:

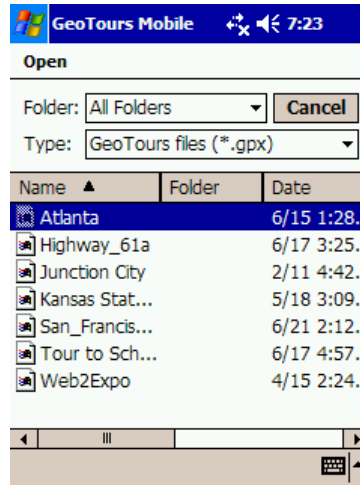
- Folder location stored on 'Settings' tab (defaults to /Storage Card/GeoTours/)
 - All .gpx files are stored in this directory
 - Data subdirectory
 - The data contains a unique subdirectory for each tour.
 - This tour subdirectory contains all media for the tour.

When downloading tours from GeoTours Xchange or Travel By GPS, you will download a zip file that already contains this directory structure. Once you download the zip file, extract all files to your PC and then copy them to the GeoTours folder location on your mobile device.

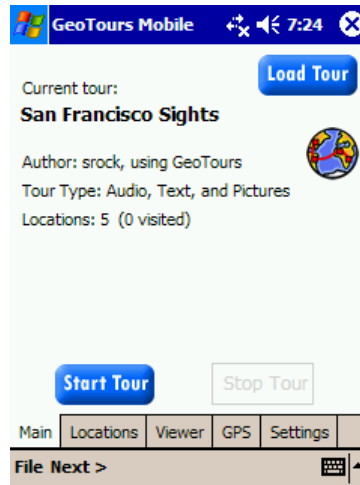
After you've transferred the tour files, click the Load Tour button on the Main tab of GeoTours Mobile.



Next, you will see a listing of all tours detected on your device. Select the one you want to load.



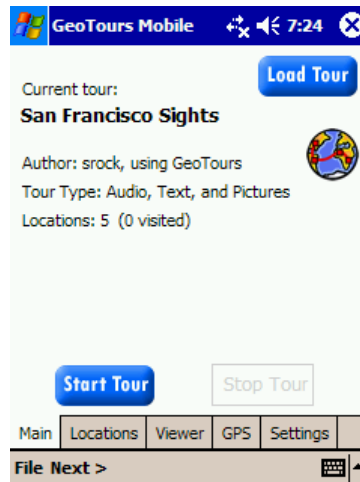
If the tour is successfully loaded, its information will then be displayed on the same screen.



Playing a Tour

When you have successfully loaded a tour, you're ready to go! First, click the Start Tour button at the bottom of your screen.

GeoTours Mobile will then connect to your GPS receiver. Be sure it is powered on. If you are prompted that your device cannot be found, be sure the baud rate and com port are set correctly on the Settings tab.



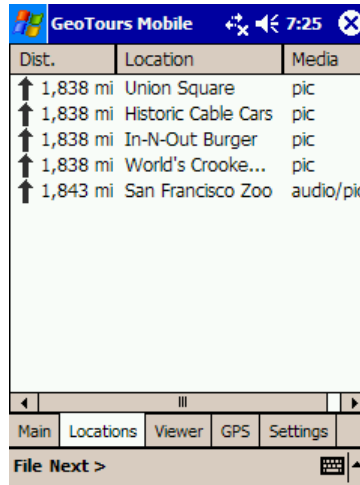
Once a connection has been made to your GPS receiver and displays the distance and direction to each tour location on the Locations tab. As you move, the distance and direction to each location is continually updated.

You can Preview or Remove locations in your tour by clicking on a location on the Locations tab.

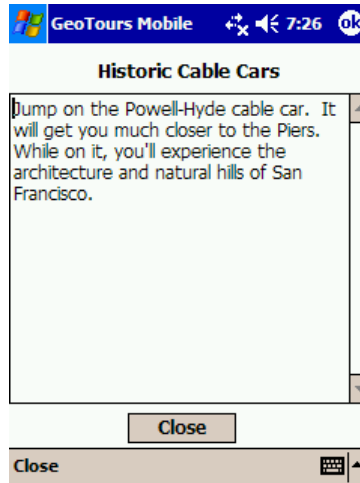
Previewing a location will display the associated multimedia on the Viewer tab just as if you were at the actual location.

Removing a location will remove the location from your tour. It will not delete the location from your device, so the next time you load the same tour all locations will be available.

When you reach a tour location, the associated media (audio, image, and text) is displayed. The audio will begin playing automatically.



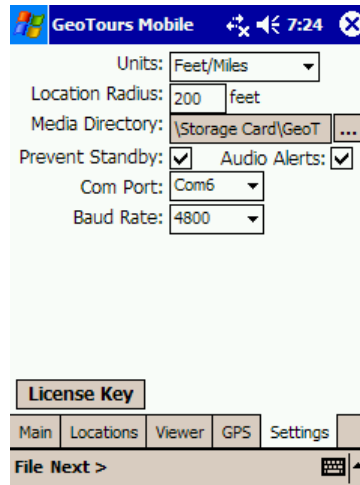
If there is a text description for the tour location, it can be viewed by clicking the 'more' button.



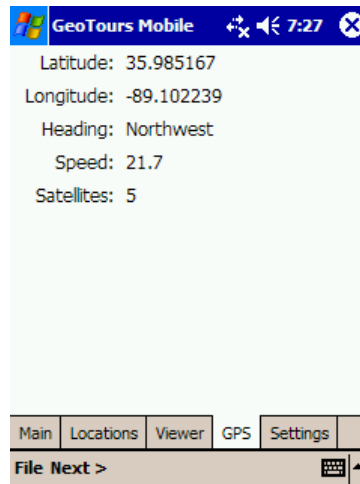
Additional Features

On the Settings tab, you can choose your units, location radius (proximity), media directory, if you want the device to prevent going into standby during a tour, if you'd like an audio alert to be played upon arriving at a non-audio tour location, and your GPS receiver settings.

The location radius is simply how close you must be to a tour location before its media will be displayed.



During a tour, you can view your GPS information on the GPS screen.



Additional Support

If you encounter any problems when using GeoTours Mobile or have additional questions, please visit the Geovative Solutions Support area by going to <http://www.geovative.com/support>